

B-Raf(V600R)

Catalog Number: 26182

Gene Symbol: BRAF, BRAF1, RAFB1

Description: Anti-B-Raf(V600R) Mouse Monoclonal Antibody

Background: B-Raf is a member of the Raf family of Ser/Thr protein kinases. It functions downstream of Ras to regulate the MAP kinase signaling pathway. Mutations in the BRAF gene cause diseases. Inherited mutations in BRAF cause cardiofaciocutaneous syndrome. Acquired mutations in BRAF have been found in cancers.

Immunogen: A synthetic peptide from the internal region of B-Raf(V600R), human origin.

Tested Applications: ELISA, WB, IHC

Recommended Dilutions:

ELISA: 1:1000-1:5000

WB: 1:500-1:1000

IHC: 1:25-1:100

Concentration: 1 mg/ml

Host: Mouse

Clonality: Monoclonal

Isotype: IgG

Purity: Purified from ascites

Format: Liquid

Preservative: No

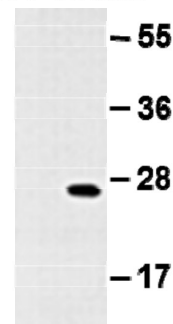
Constituents: PBS (without Mg²⁺ and Ca²⁺), pH7.4, 150 mM NaCl, 50% glycerol

Species Reactivity: Recognizes V600R mutated, but not wild-type B-Raf proteins.

Storage Conditions: Store at -20°C. Avoid repeated freezing and thawing

Western blot:

BRAF protein
WT V600R



1 2

WB: Anti-B-Raf (V600R) mAb

Western blot analysis of recombinant B-Raf proteins.

Purified His-tagged B-Raf (V600R) protein (lane 2) and corresponding wild type protein (lane 1) were blotted with anti-B-Raf (V600R) monoclonal antibody (Cat. # 26182).

FOR RESEARCH USE ONLY. NOT FOR DIAGNOSTIC APPLICATIONS